

PARTNERS IN PROGRESS

ALL IN 2020

STEEL METAL | AIR | RAIL | TRANSPORTATION
SMART





TAUHIRA ALI

MILWAUKEE TOOL



CONSTRUCTION TECHNOLOGY DEMYSTIFIED

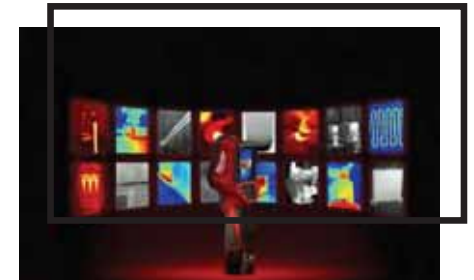
MILWAUKEE TOOL

INDUSTRY-LEADING MANUFACTURER OF **HEAVY-DUTY** POWER TOOLS, ACCESSORIES,
HAND TOOLS, AND **PRODUCTIVITY SOLUTIONS** FOR **PROFESSIONAL USERS WORLDWIDE**

FULL SYSTEM APPROACH



INNOVATIVE NEW SOLUTIONS



MILWAUKEE TOOL

INDUSTRY-LEADING MANUFACTURER OF **HEAVY-DUTY** POWER TOOLS, ACCESSORIES,
HAND TOOLS, AND **PRODUCTIVITY SOLUTIONS** FOR **PROFESSIONAL USERS WORLDWIDE**

WORKFORCE DEVELOPMENT



ERGONOMICS



ADVANCED SPECIALISTS



CONSTRUCTION TECHNOLOGY



**CHAMPION INNOVATION CULTURE TO ELIMINATE TODAY'S CHALLENGES
AND EXPLORE TOMORROW'S OPPORTUNITIES**



CHAMPION **INNOVATION CULTURE** TO ELIMINATE TODAY'S CHALLENGES AND EXPLORE **TOMORROW'S OPPORTUNITIES**

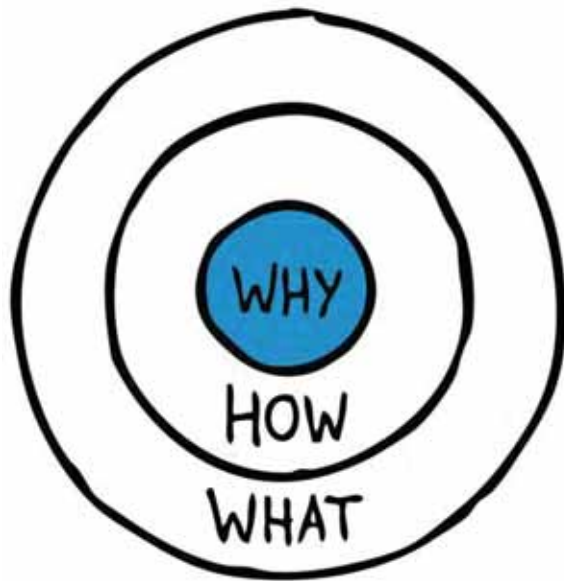


**CHAMPION INNOVATION CULTURE TO ELIMINATE TODAY'S CHALLENGES
AND EXPLORE TOMORROW'S OPPORTUNITIES**

START WITH THE WHY

CHAMPION INNOVATION CULTURE TO ELIMINATE TODAY'S CHALLENGES AND EXPLORE TOMORROW'S OPPORTUNITIES

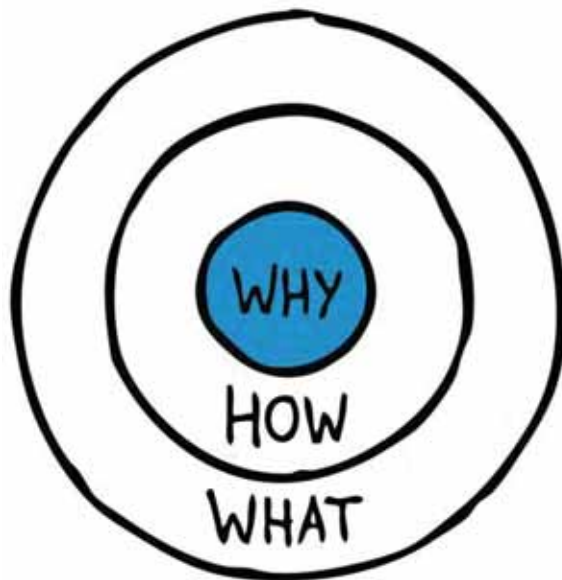
Simon Sinek's "Golden Circle"



START WITH THE WHY

CHAMPION INNOVATION CULTURE TO ELIMINATE TODAY'S CHALLENGES AND EXPLORE TOMORROW'S OPPORTUNITIES

Simon Sinek's "Golden Circle"



START WITH THE WHY

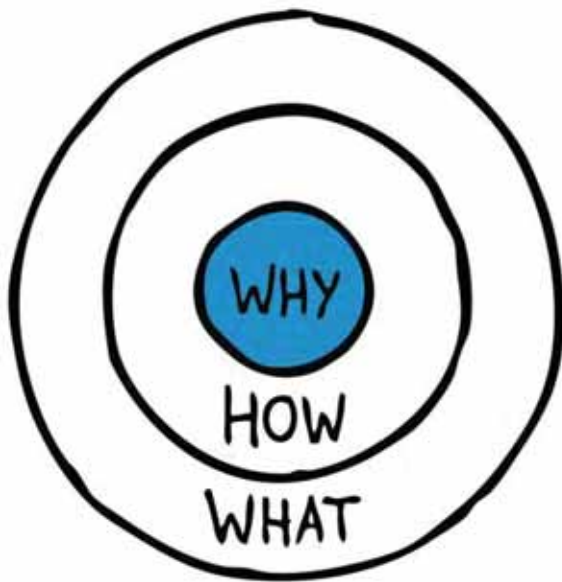
WHY: Core belief of the business, why the business exists

HOW: How the business fulfills that core belief

WHAT: What the company does to fulfill that core belief

CHAMPION INNOVATION CULTURE TO ELIMINATE TODAY'S CHALLENGES AND EXPLORE TOMORROW'S OPPORTUNITIES

Simon Sinek's "Golden Circle"



START WITH THE WHY

WHY: Core belief of the business, why the business exists

HOW: How the business fulfills that core belief

WHAT: What the company does to fulfill that core belief

WHAT'S YOUR WHY?

What's your WHY?

CHAMPION **INNOVATION CULTURE** TO ELIMINATE **TODAY'S CHALLENGES**
AND EXPLORE **TOMORROW'S OPPORTUNITIES**

ESTABLISH THE **WHY** THAT DRIVES CONTRACTORS TODAY...



CHAMPION INNOVATION CULTURE TO ELIMINATE TODAY'S CHALLENGES AND EXPLORE TOMORROW'S OPPORTUNITIES

ESTABLISH THE **WHY** THAT DRIVES CONTRACTORS TODAY...

Empower People


Culture eats strategy for breakfast. Intentionally, we double down on building an incredible culture.

Do Good Work

When we change the skyline, we become a part of history.

Do It Efficiently

The day I do things the same as yesterday means I'm one day closer to being bankrupt.





CHAMPION INNOVATION CULTURE TO ELIMINATE TODAY'S CHALLENGES AND EXPLORE TOMORROW'S OPPORTUNITIES

ESTABLISH THE **WHY** THAT DRIVES CONTRACTORS TODAY...

Empower People

Culture eats strategy for breakfast. Intentionally, we double down on building an incredible culture.

Do Good Work

When we change the skyline, we become a part of history.

Do It Efficiently

The day I do things the same as yesterday means I'm one day closer to being bankrupt.



AND **HOW** DO CONTRACTORS ACCOMPLISH THE **WHY?**

EMPOWER PEOPLE

DO GOOD WORK

DO IT EFFICIENTLY



EMPOWER PEOPLE



SOFTWARE ECOSYSTEMS



ERGONOMICS & SAFETY



COLLABORATION



PERSONNEL COORDINATION



ATTRACT & RETAIN TALENT

DO GOOD WORK

DO IT EFFICIENTLY

EMPOWER PEOPLE



SOFTWARE ECOSYSTEMS



ERGONOMICS & SAFETY



COLLABORATION



PERSONNEL COORDINATION



ATTRACT & RETAIN TALENT

DO GOOD WORK



ENVIRONMENT MAPPING



BUILDING INFORMATION
MODELING



SUSTAINABLE CONSTRUCTION



ADVANCED MATERIALS

DO IT EFFICIENTLY

EMPOWER PEOPLE



SOFTWARE ECOSYSTEMS



ERGONOMICS & SAFETY



COLLABORATION



PERSONNEL COORDINATION



ATTRACT & RETAIN TALENT

DO GOOD WORK



ENVIRONMENT MAPPING



BUILDING INFORMATION
MODELING



SUSTAINABLE CONSTRUCTION



ADVANCED MATERIALS

DO IT EFFICIENTLY



OFFSITE CONSTRUCTION



INVENTORY MANAGEMENT



CONNECTED EQUIPMENT



AUTOMATED MACHINERY



DATA VISUALIZATION



SOFTWARE ECOSYSTEMS



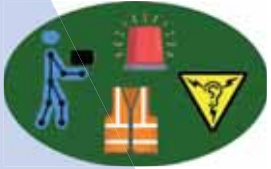
- Project management, finance, ERP and CRM
- Saturated market of incompatible systems
- Leaders emerging through acquisitions and partnerships



COLLABORATION



- Training, remote coordination and shared records
- Proactively identify problems, safer access to expertise
- Crowded solution space with common consumer devices



ERGONOMICS & SAFETY



- Sound, dust, vibration, haptics and site monitoring
- Ethical and productivity benefits, reduced exposure
- Solutions must demonstrate efficacy and clear ROI



PERSONNEL COORDINATION



- Enables attendance, safety, productivity and performance
- Strategic adoption for training, collaboration and safety
- Privacy, security concerns lead to mistrust and slow adoption



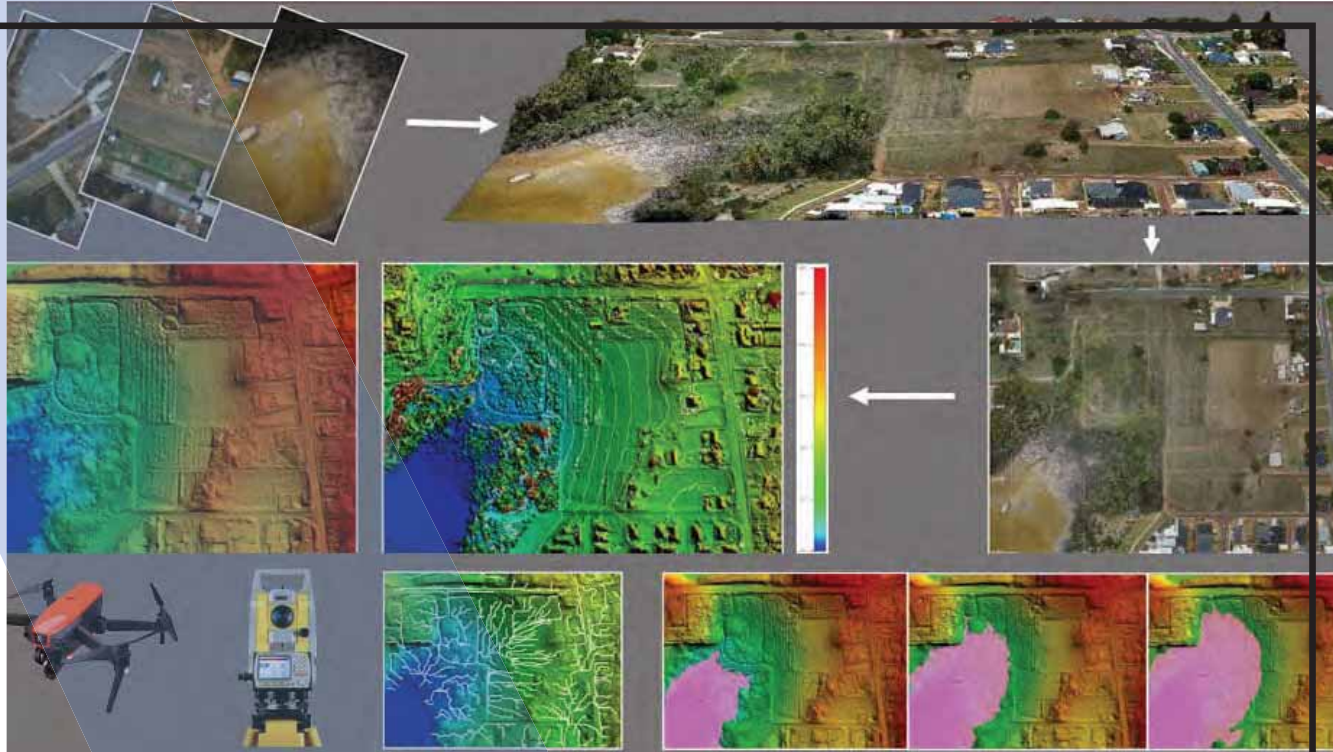
ATTRACT & RETAIN TALENT



- Recruiting, training, retaining, and diversifying workforce
- Skilled labor shortage and cultural stigma challenges
- Technology draws interest and opportunities for new skills



ENVIRONMENT MAPPING



- 3D scans, 360° records, layout, drones and measurement
- Estimation, bidding, design, marketing and documentation
- Typically involves BIM and specialized teams or services



BUILDING INFORMATION MODELING



- Digital representation of physical and functional traits
- Info at all project phases to minimize information losses
- Expands from CAD model to project, scheduling and cost



SUSTAINABLE CONSTRUCTION



- LEED, efficient resource usage and lifecycle support
- Focus on energy efficiency and low carbon footprint
- Adoption through government and public works initiatives



ADVANCED MATERIALS



- Composites and manufacturing strategies
- Cost effective, efficient and sustainable buildings
- Driven by regulations, value engineering and differentiation



OFFSITE CONSTRUCTION



- Manufacture and transport of building components
- Prefabrication, manufacturing and modular construction
- Steers timeline, cost, quality, safety, labor and logistics



CONNECTED EQUIPMENT



- Adaptive, reactive, diagnostic, recording and tool-to-tool
- Opens the door to proactive diagnostics and servicing
- Remote controlled tools, tool-to-phone/cloud or tool-to-tool



INVENTORY MANAGEMENT



- Resource movement helps drive and indicate productivity
- Equipment, fleet, rental and consumable integration
- Solutions integrate tool #s and physical or wireless tags



AUTOMATED MACHINERY



- Focuses on monotonous, trivial and dangerous tasks
- Supplements human efforts in precise, repeatable operations
- Drones, UAV, smart carts, robots and 3D printing



DATA VISUALIZATION



- Projected info, 360° records, AR, VR, MR and XR
- Ranges from immersive to external, ex: contacts to phone
- Enhances information for increased collaboration

EMPOWER PEOPLE



SOFTWARE ECOSYSTEMS



ERGONOMICS & SAFETY



COLLABORATION



PERSONNEL COORDINATION



ATTRACT & RETAIN TALENT

DO GOOD WORK



ENVIRONMENT MAPPING



BUILDING INFORMATION
MODELING



SUSTAINABLE CONSTRUCTION



ADVANCED MATERIALS

DO IT EFFICIENTLY



OFFSITE CONSTRUCTION



INVENTORY MANAGEMENT



CONNECTED EQUIPMENT



AUTOMATED MACHINERY



DATA VISUALIZATION

EMPOWER PEOPLE



SOFTWARE ECOSYSTEMS



ERGONOMICS & SAFETY



COLLABORATION



PERSONNEL COORDINATION



ATTRACT & RETAIN TALENT

DO GOOD WORK



ENVIRONMENT MAPPING



BUILDING INFORMATION
MODELING



SUSTAINABLE CONSTRUCTION



ADVANCED MATERIALS

What trends
interest **YOU?**

DO IT EFFICIENTLY



OFFSITE CONSTRUCTION



INVENTORY MANAGEMENT



CONNECTED EQUIPMENT



AUTOMATED MACHINERY



DATA VISUALIZATION

What technologies and trends interest YOU?

CREATING THE FUTURE

HOW DO YOU EXPLORE & CHAMPION BREAKTHROUGH SOLUTIONS?



Milwaukee

TAUHIRA ALI

Milwaukee Tool

tauhira@milwaukeeetool.com

262-402-2751

**THANK
YOU**

**DIGITAL TRANSFORMATION IS
NOT SIMPLY ABOUT TECHNOLOGY,
IT'S A LEADERSHIP CHALLENGE.
IT'S ABOUT EMBRACING NEW
WAYS TO BRING TOGETHER
PEOPLE, DATA, AND PROCESSES.**

PARTNERS IN PROGRESS

ALL IN 2020

STEEL METAL | AIR | RAIL | TRANSPORTATION
SMART

